



Knowledge Relay DATA INTEGRATOR

KEY FEATURES AND BENEFITS

- Process modeling that uses standardized workflow notation through an intuitive graphical toolbox
- Fully graphical development environment that is self-documenting and easily grasped by business analysts and IT personnel
- Highly scalable and fast execution platform, using both ETL and ELT approaches
- Broadest connectivity to support all source and target systems – more than 250 enterprise applications and file types out-of-the-box
- Available as stand-alone solution or as part of the Knowledge Relay Suite

ENABLING OPERATIONAL BUSINESS INTELLIGENCE

Knowledge Relay Data Integrator is a data-neutral solution that transfers existing data and prepares it for processing, transforming its format while preserving existing information. Scalable and self-documenting, Data Integrator lets an enterprise organize and transform large data stores by connecting to all source and target systems.

Transforming data integration

Leveraging the power of open source software, the Knowledge Relay Suite is an operational business intelligence solution that delivers pertinent information on a timely basis, putting it into the hands of those who make operational decisions in a format meaningful to them.

Data integration is the first step. It often involves processing high volumes of data in heterogeneous environments that includes multiple, even legacy, systems. Complex mappings and transformations are required, with aggregations, calculations, and other operations. In many cases, consistency must be maintained between old and new systems, after the data has been migrated.

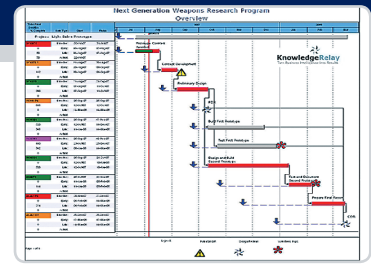
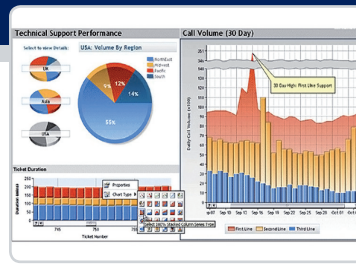
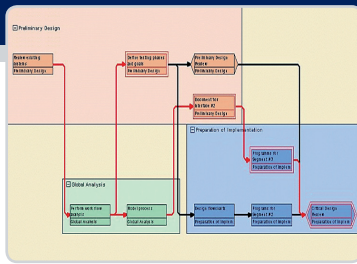
The flexibility to meet your needs

Knowledge Relay Data Integrator addresses all of these issues, and more. Available as a stand-alone solution or an integral part of the Knowledge Relay Suite, Data Integrator is optimized for the migration of enterprise data. Knowledge Relay provides a graphical user interface and an easy-to-understand, non-technical view of a business workflow that includes:

- **Business-oriented process modeling** that ensures proper coordination during the integration of business data and

processes. Systems, connections, steps and requirements are all designed using standardized workflow notation through an intuitive graphical toolbox.

- **Fully graphical development environment** that is self-documenting, improves productivity, makes it easy to perform dry runs, and allows reuse of data mappings and transformations for synchronization processes (if applicable). Business analysts can select and integrate their own data easily, on demand or on an automated schedule.
- **Highly scalable and fast execution platform** with a grid approach that enables the processing of data close to its source and target, using both the ETL (Extract, Transform and Load) and ELT (Extract, Load and Transform) approaches for shorter DBMS service downtimes. Knowledge Relay Data Integrator is one of the only data integration solutions that leverages both the traditional ETL approach as well as the ELT approach. Our job server runs jobs at a predefined schedule, ensuring that data is distributed at the right time to the right places.
- **Broadest connectivity** to support all source and target systems. Knowledge Relay offers native, out-of-the-box con-



nectivity with more than 250 enterprise applications and file types, including:

- SAP and other enterprise resource planning systems
- Primavera
- Artemis
- Oracle
- SQL Server
- Deltek Cobra
- Deltek Open Plan
- Microsoft Project
- Customer relationship management applications
- Files in XML, CSV, XLS and dozens of other formats
- Internally developed applications.

With the Knowledge Relay Suite, your organization can be up, running and making better decisions in just 30 days. Even archived data from legacy systems can be sourced without reformatting, making it as accessible as information used every day.

FEATURES AND BENEFITS

ETL Capabilities: The ETL (Extraction, Transformation and Loading) processes are critical components of Knowledge Relay's operational business intelligence infrastructure. While nearly invisible to Data Integrator users, ETL processes and retrieves the data from all operational systems and pre-processes it for analysis and reporting.

The capabilities found in Data Integrator are optimized for enterprise-grade ETL. These ETL processes transform and transfer data from various applications. The ETL capabilities combine the data in intelligent ways, making it highly useful to all levels of your organization by:

- Supporting more than 250 applications and databases out-of-the-box.
- Extracting data from virtually any source. Data Integrator can automatically accept ERP, CRM, RDBMS, XML, CSV and many other file types from a wide range of enterprise and internally developed applications.
- Transforming this data to reconcile it across source systems, perform calculations or string parsing, enrich it with external lookup information, and match the format

required by the target system (Third Normal Form, Star Schema, Slowly Changing Dimensions, etc.).

- Loading the resulting data, if appropriate, into reporting solutions, including Knowledge Relay Information Visualizer.

ELT Capabilities: Extract, Load and Transform (ELT) processes leverage the power of your enterprise databases to execute the data transformations inside the RDBMS, to achieve high-volume processing.

Data Synchronization: In every organization, there are instances in which data is managed separately in many different applications or databases. Knowledge Relay Data Integrator gathers this information from across multiple locations and synchronizes it, presenting a clear view of data across the organization.

CLIENT SERVICES FOR ADVANCED DATA INTEGRATION NEEDS

When your data integration requirements are complex, Knowledge Relay's Client Services team can assist with:

- Operational data integration: Knowledge Relay can readily assist you with data migration/loading and data synchronization/replication, the most common applications of operational data integration.
- Data integration: Knowledge Relay will work with your company to transfer existing data to the new environment, in a format suitable for the Knowledge Relay Suite that also preserves the information present in the old.
- Data synchronization: Knowledge Relay's data synchronization services include all the processes that maintain data in sync between the applications and databases.
- ETL for business intelligence and data warehousing: Knowledge Relay provides assistance with developing ETL processes, to help ensure the accuracy and timeliness of the entire Knowledge Relay Suite.

For more information about Knowledge Relay's Data Integrator or other solutions from Knowledge Relay, please visit www.knowledgerelay.com.



KnowledgeRelay

From Data to Decisions in 30 Days. Guaranteed.

5836 Corporate Avenue
Cypress, CA 90630
Tel 800 447 2633