



Knowledge Relay INFORMATION VISUALIZER

KEY FEATURES AND BENEFITS

- Classic Business charts: Pie, Bar, Line, Bubble, and more
- Gantt reports
- PERT reports
- Multi-Format tabular reports
- Earned Value reports with data from multiple sources
- Dashboards that can be easily customized
- Accurate visualization
- Easy printability

EXCEPTIONALLY FLEXIBLE ENTERPRISE REPORTING AND SHARING

Knowledge Relay Information Visualizer offers a larger variety of reports than any other solution, as well as easy drill-down into the data. Users specify, schedule and automate report delivery through a single point of control. An intuitive, web-based user interface, coupled with a powerful job server, distributes PDF reports automatically via email, by posting them to a web portal or through numerous print options.

A graphical approach breaks down barriers

Leveraging the power of open source software, the Knowledge Relay Suite is an operational business intelligence solution that delivers pertinent information on a timely basis, putting it into the hands of those who make operational decisions in a format meaningful to them.

Knowledge Relay Information Visualizer is an enterprise reporting engine available as a stand-alone solution or an integral part of the Knowledge Relay Suite. It offers a single, consistent interface for report creation that spans multiple data sources and formats, making it easy for business users to interact with and design reports without programming or outside help. An easy-to-use user interface in a Microsoft™ Internet Explorer browser allows users to quickly navigate, create and share their work – saving time and money.

In addition, IT resources are reduced because Information Visualizer runs from an IIS-based intranet web server that your IT staff already knows how to manage. Training is similarly simplified because users see a single, consistent interface.

Reports to meet every information need

Knowledge Relay's broad range of report capabilities includes:

- Classic Business charts such as Pie, Bar, Line, Bubble, and more.
- Gantt, which can be tailored to utilize data from various and combined sources (Project Management Systems, SAP™, Passport™, etc.).
- PERT displays the logical constraints and inter-dependencies between tasks/activities.
- Multi-Format tabular reports can be used to create specific views of your data, combining both text and graphics without IT or administrative intervention.
- Earned Value reports that allow users to quickly and easily combine data from different applications into concise financial reports.
- Dashboards that are tailored to users' individual needs.

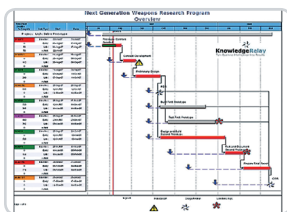
Outstanding, accurate visualization and print capabilities

The elements on Knowledge Relay reports are highly customizable and can change when specific parameters or thresholds are met. Our reports are also very easily printed, eliminating a key source of user frustration.

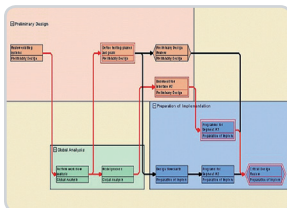


PRODUCTS AND BENEFITS

Gantt: Large, complex enterprises often have complex requirements for how they need to display their data. With Gantt, you can show calendar breaks in bars, split cells in tables, utilize conditional coloring, multiple time-scale sections, and much more. Knowledge Relay's Gantt module is not restricted to any particular project management environment. Synchronized resource displays add an instant view of both costs and schedule.



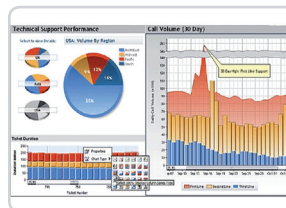
PERT: Knowledge Relay's PERT module allows you to create powerful logic diagrams with logic lines that are exceptionally easy to follow. PERT shows you the potential impact of delayed actions, enabling you to take proactive, corrective action.



Multi-Format: Knowledge Relay Multi-Format allows you to decide, down to the individual user, who can create, modify, save and delete reports – all online in a browser-based interface. VBA scripts can be used to prompt users for input, add variable conditions to your reports, and change formatting on the fly.



Dashboard Driver: Through the Dashboard Driver you can monitor critical business metrics, be alerted about issues, manage goals, and track performance across the organization. Dashboard Driver can also present snapshots of multiple reports in a single window.



TraceNet: On a more granular project management level, Knowledge Relay's TraceNet lets you graphically trace all predecessor and successor logic constraints, including across multiple projects, from any point in a Gantt or PERT document. This helps users identify missed milestones or slippage, as well as potential out-of-process work requirements that delay projects. No other Business Intelligence solution offers this level of operational reporting.

For more information about Knowledge Relay Information Visualizer or other solutions from Knowledge Relay, please visit www.knowledgerelay.com.


KnowledgeRelay
From Data to Decisions in 30 Days. Guaranteed.

5836 Corporate Avenue
Cypress, CA 90630
Tel 800 447 2633